

Schlage 468 Z-Wave Lock Integration With Leviton VRC0P Serial Interface

Article Number: 36 | Rating: Unrated | Last Updated: Thu, Mar 9, 2017 at 8:47 AM

In this example we will review the steps needed to perform a manual reverse association with a Schlage 468 lock to a Leviton VRC0P Serial Interface. The reverse association is required for two-way communication between the lock and Serial Interface. This means if the lock changes state manually (locking or unlocking) this will be reported to the Serial Interface.

Requirements

- Leviton VRUSB Programming USB Stick
- Leviton VRC0P Serial Interface Verison +3
- Leviton Vizia RF Installer software version 1.1.2.0 (www.leviton.com/rfinstaller)
- PC With Windows 7 or less (XP, Vista, etc .)
- Schlage 468 Motorized Deadbolt

1. Include Devices
2. Set Standard Reverse Associations
3. Open the “Diagnostics” menu and select “Routing Slave Associations”
4. Select Routing Slave
5. Associate the Serial Interface
6. Additional Locks





Include Device:

- Include lock and all other devices to be part of the network, including the VRC0P last.
- To Include, select the include button on the top, press OK then enter the “Programming Code” that comes with

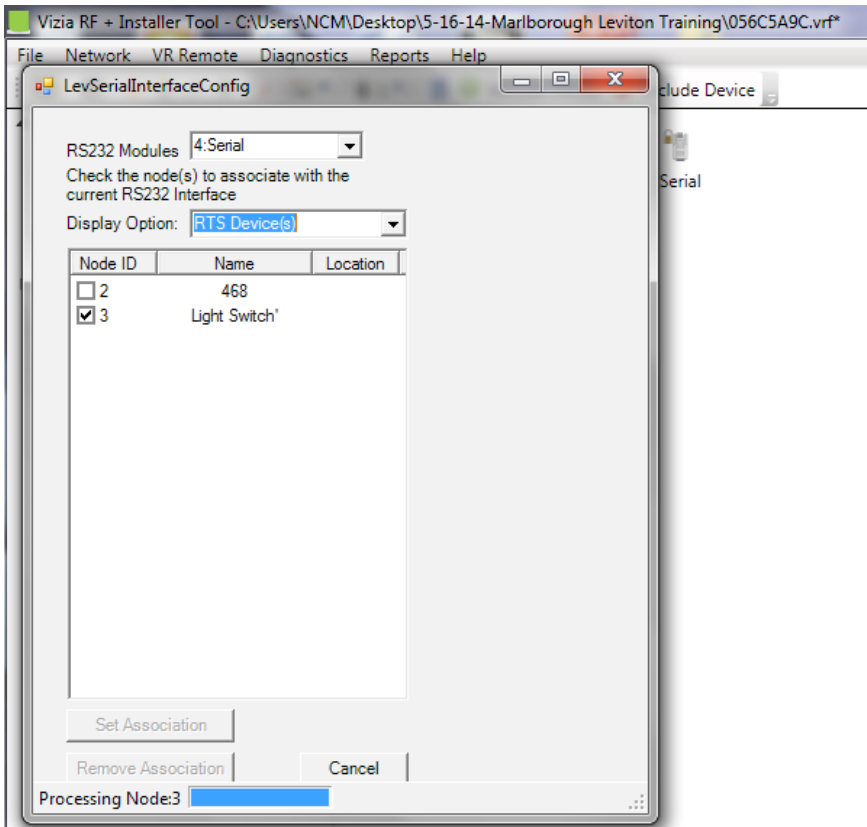
the lock, followed by pressing “0.”

- Set associations to all other devices except 468 locks.

-This will typically be two-way communicating devices such as Vizia RF lights and thermostats.

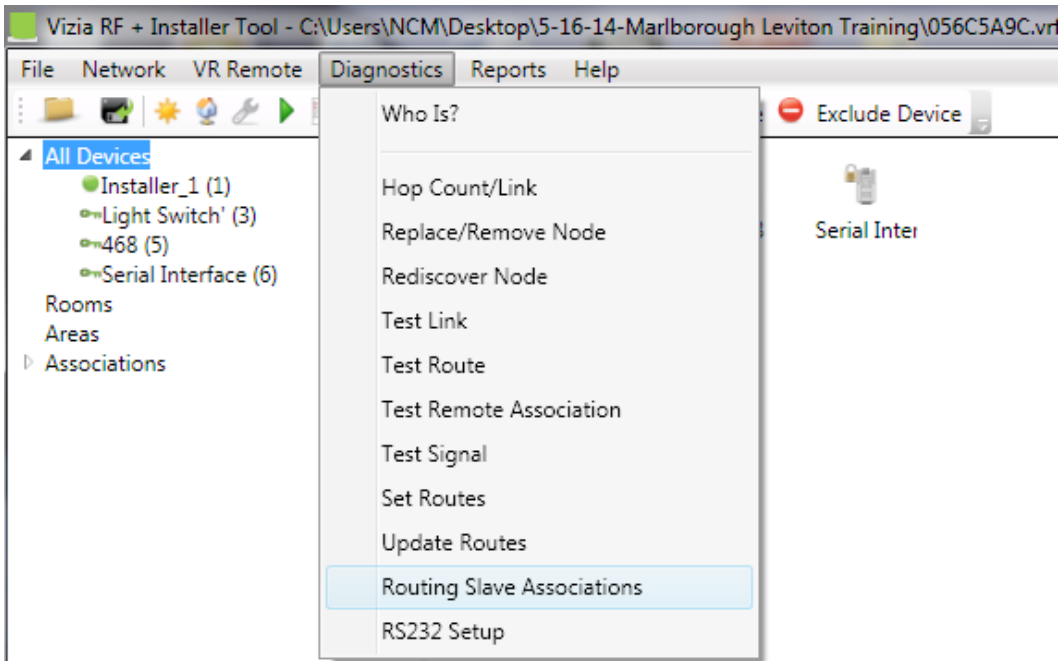
Right click on the Serial Interface and select “RS232 Setup.”

- Select the devices to associate EXCEPT the 468 lock(s) and click ”Set Association. “



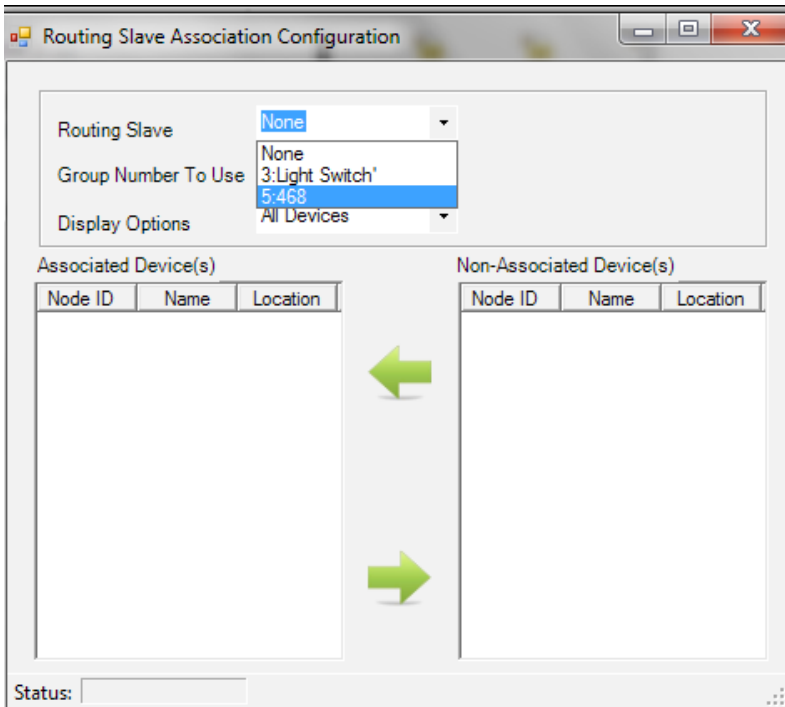
Open Diagnostics and select Routing Slave Associations

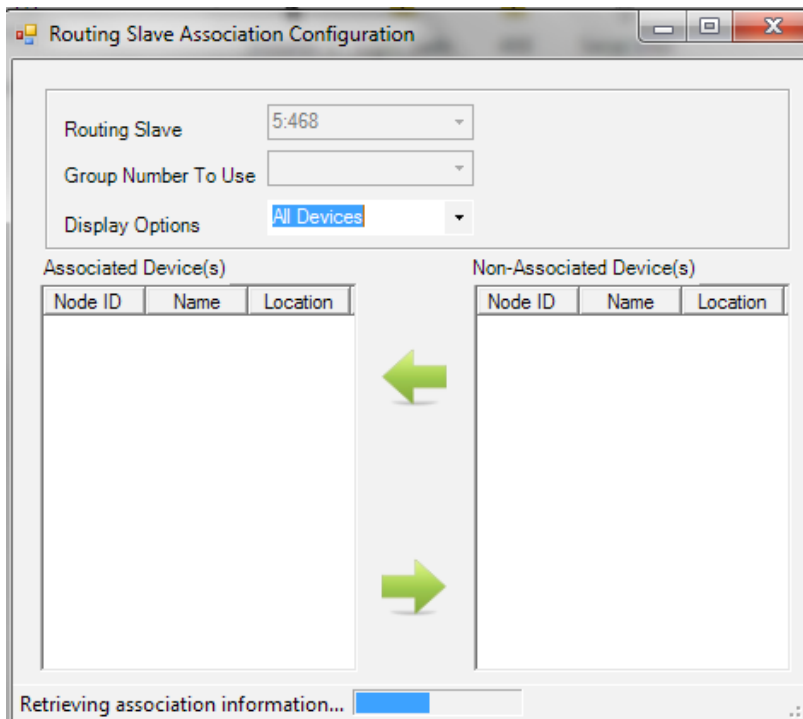
- Select Routing Slave
- You will need to be near the lock you are associating.
- Set "Routing Slave" to the 468 lock you wish to associate to the Serial Interface.
- This will retrieve association information from all of the devices and populate them in the "Non-Associated Devices" column.
- Open the "Diagnostics" menu and select "Routing Slave Associations."



Select Routing Slave

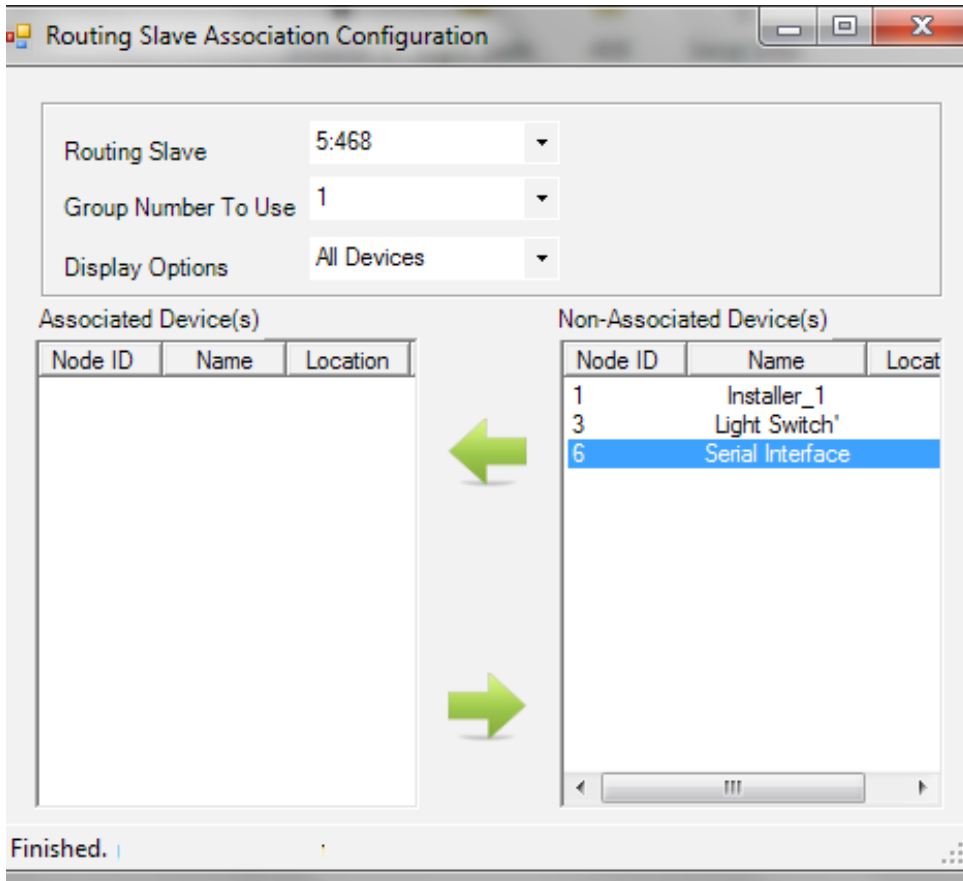
- You will need to be near the lock you are associating.
- Set “Routing Slave” to the 468 lock you wish to associate to the Serial Interface.
- This will retrieve association information from all of the devices and populate them in the “Non-Associated Devices” column.





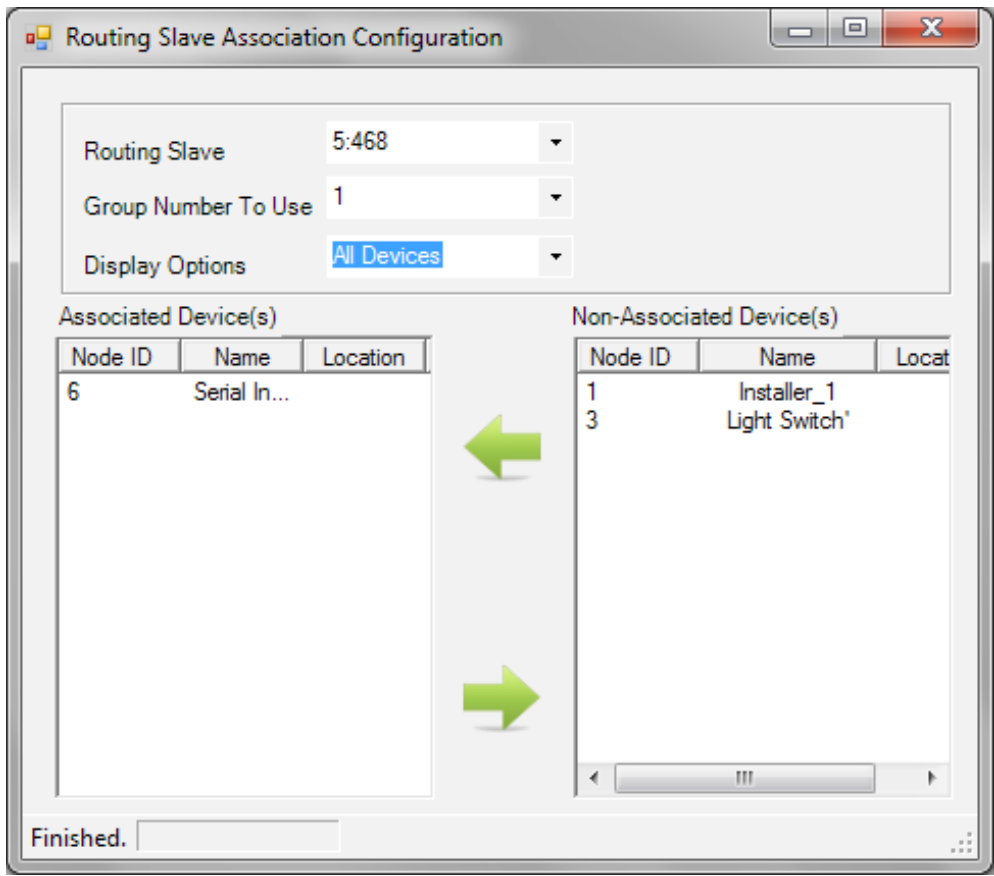
Associate the Serial Interface

- Under “Non-Associated Device(s)” click on the serial interface to highlight.
- Click the top or left green arrow to move the serial interface to the “AssociatedDevice(s)” column.
- Once the Serial Interface appears in the “Associated Devices” column the action is completed and is denoted as “Finished” in the lower left corner of the window.



Additional Locks

- To associate additional locks, select the next routing slave to be associated with the serial interface.
- Click the “left” green arrow to move the serial interface to the “Associated Device(s)” column.



You should now be able to control your locks as well as see the status of it.

If you have any questions or issues, please give us a call at 800-282-8864 or email sales@worthdist.com

This article was created by Joel DeYoung - Technical Sales

Posted by: [Worthington Technical](#) - Thu, Mar 9, 2017 at 8:47 AM. This article has been viewed 9784 times.

Online URL: <http://worthingtondistribution.com/kb/article.php?id=36>